

# BLACKROSE

LOS ANGELES

## TECH SPEC

1714 N. Vermont Ave, Los Angeles, CA, 90027  
www.blackrosela.com

## GENERAL

**Capacity:** 130 (including staff)

### PRODUCTION DIRECTOR

Brandon Rosenfeld – 520.370.6790  
[brandon@blackrosela.com](mailto:brandon@blackrosela.com)

### WIFI

**Network:** BlackRoseLA  
**Password:** blackrose1

## SOUND SYSTEM

### CONSOLE:

Midas M32 Live 40 Channel Mixer

### MONITORS:

(2) QSC K12's

### SPEAKERS & POWER

(4) 210A's eventor  
(6) Polk Audio Fills

### MICROPHONES & STANDS:

(3) Wireless Shure Beta 58a  
(1) Wired Handheld SM58  
(1) Shure Beta Headset

### STANDS:

(2) Hinged Stands  
(2) Straight Stands  
(1) Kick Drum Stand

### Shure Drum Pack:

(3) SM 57s  
(1) Beta 52A Kick

## LIGHTING SYSTEM

### CONSOLE:

Elation Midicon, Running:  
Chauvet Show Express

### LED VIDEO AND PROJECTION:

3.9 mil (515 x 512)  
Running off APC 40  
Arkaos GranVJ (stacked w/ content)  
**For Own Videos:** Highest Quality Video = 10K

### LIGHTS:

(8) Par 56's  
(6) LED Spots  
(4) Beams  
(1) source 4

### HAZERS:

(2) Chauvet Hurricane

## VENUE & STAGE SPECS

# BLACKROSE

LOS ANGELES

## TECH SPEC

1714 N. Vermont Ave, Los Angeles, CA, 90027  
www.blackrosela.com

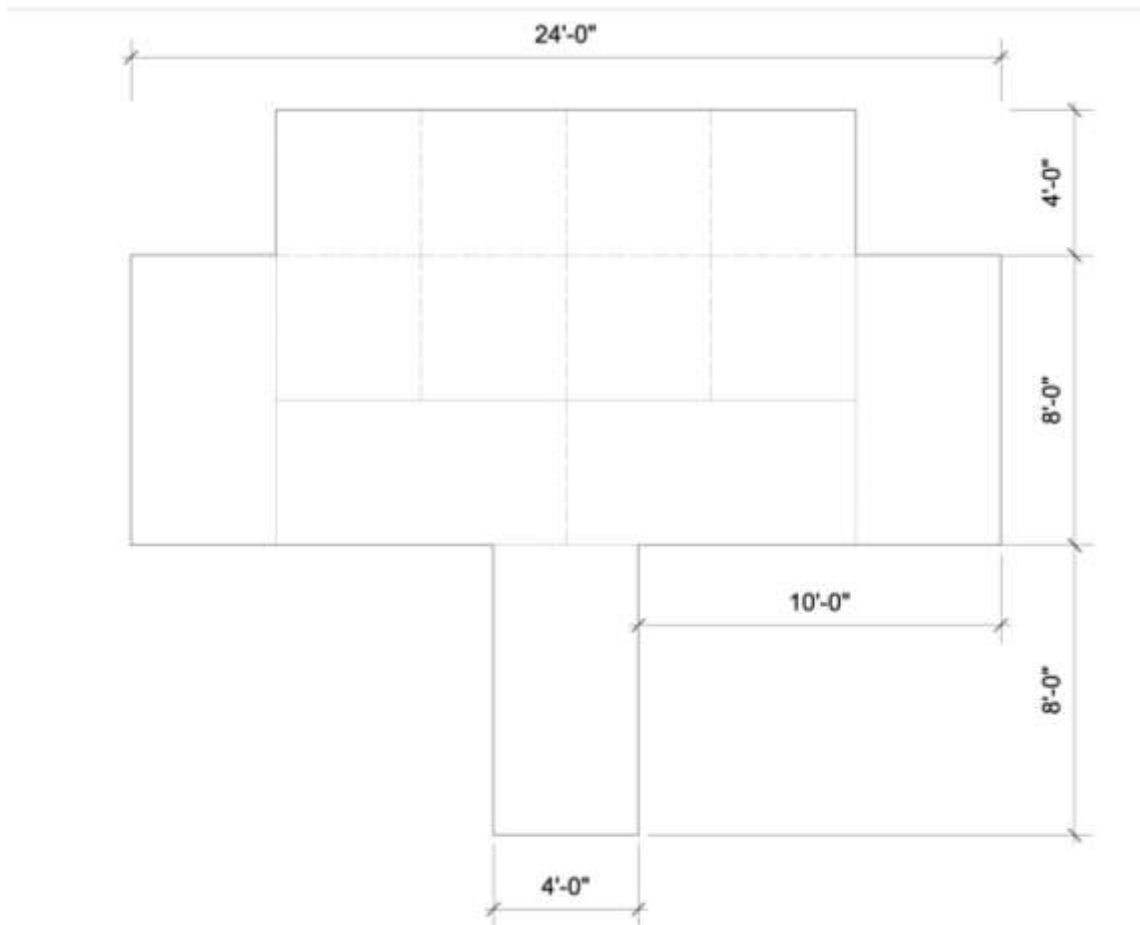
Stage sits at 2'

Highest Point from Stage 11'

(1) Circuit Provided on stage w/ 6 outlets

\*\*\*NO RIGGING ALLOWED\*\*\*

## STANDARD STAGE SETUP



## PARKING

\*\*At least 4 days' notice to the venue is required to obtain permits for tour bus parking\*\*

# BLACKROSE

LOS ANGELES

## TECH SPEC

1714 N. Vermont Ave, Los Angeles, CA, 90027  
www.blackrosela.com

**Only street parking is provided.**

*Our Valet lot is \$15 and available as well.*

Otherwise pull into the back in the venue to load in your gear and then street park.

